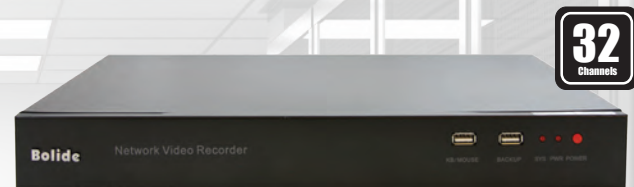


## Network Video Recorder (NVR) The most accessible NVRs on the market.



### Model #:BN-NVR/S4,S8 | BN-NVR/S4 POE

- High Profile H-264 Recording and Decoding
- Embedded iPac GUI with full mouse control
- High Definition output HDMI or VGA up to 1080p
- Internal removable HDD up to two drive
- Easy to use GUI, low learning curve for users
- Multi NVR system setup from NVMS
- Remote view from Web browser
- Live view on your mobile devices iOS or Android



### Model #:BN-NVR/NS16, NS32

- High Profile H-264 Recording and Decoding
- Embedded iPac GUI with full mouse control
- Support iPac 5 Mega Pixel Cameras
- High Definition output HDMI or VGA up to 1080p
- Internal removable HDD up to four drive
- Easy to use GUI, low learning curve for users
- Multi NVR system setup from NVMS
- Remote view from Web browser
- Live view on your mobile devices iOS or Android
- Support large application and manage up to 32 iPac Cameras



### Model #:BN-NVR/N4,N8,N16

- Linux Embedded - free from PC crash and virus attack
- High throughput for iPac camera recording
- Supports Stream Profile for remote live view bandwidth control
- Supports mobile client for iPhone / iPad / Android
- Web-based configuration, live viewer, playback
- RAID 0,1,5,10 for maximum capacity or data protection
- Online GUI recording schedule
- Digital PTZ and multi-view
- Real-time digital output, Email alert and push notification on mobile
- Remote I/O solution and camera I/O integration
- Playback with 5 types of intelligent event search
- E-map with indicator & Digital watermark
- Fully compatible with iPac<sup>®</sup> series camera



### Model #:iPac 2.5

- Supports up to 64\* channels
- Supports iPac IP cameras and ONVIF
- Supports H.264 compression format
- Multi-monitor display
- Privacy Mask
- On the edge motion integration
- OnGuard (Software watchdog)
- Failover Recording Server
- E-map
- Two-way audio
- Optional add-on Video Intelligent

[www.bolideco.com](http://www.bolideco.com)

# Standalone NVR



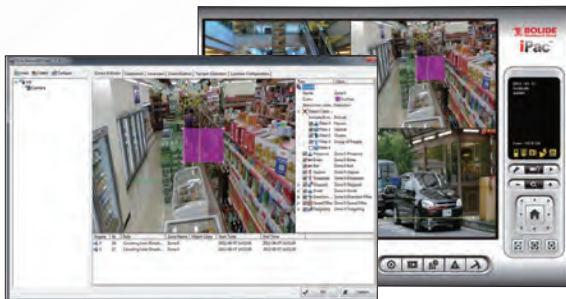
### Specifications:

<b>Model:</b>	BN-NVR/S4,S8	BN-NVR/S4 POE	BN-NVR/NS16, NS32
<b>Video</b>			
Recording	4ch 1080P real-time video input (30 fps) Or 8ch 720P real-time video input (30fps) Or 16ch D1 real-time video input (30 fps)		5M, 2M, 1.3M, D1
Output Display	Single display 1080P or 6 x D1 Real Time Display		Support up to 5M Display
Output Resolution	VGA or HDMI software select 1280x1024 or 1 024x768 or 1920x1 080p		
Decoding	1080p / 720p / 6xD1 (30fps at all resolutions)		Up to 5M, 1080p/720p/480p
Video Decoding	Up to H.264 high profile to level4.2		
Rate Control	VBR / CBR		
Stream Input	D1: Standard 2Mkpbs D1 (main stream) @ 30fps 720P: Standard 4Mkpbs 720P (main stream) @ 30fps 1080P: Standard 6Mkpbs 1080P (main stream)@ 30fps 5M: Standard 6Mkpbs (main stream) @ 10fps		
Max. Recording Stream	24Mbits/s	128Mbits/s	
<b>Storage</b>			
HDD	2 x HDDs	up to 4 x HDDs	
Recording Time	D1: 2Mbit/s, 2M x 3600s/8 = 675MB/H 720P: 4Mbit/s, 4M x 3600s/8/1000 = 1.8GB/H 1080P: 6Mbit/s, 6M x 3600s/8 = 3.6GB/H		
Recording Mode	Constant Recording / Motion detection.		
<b>Network</b>			
Network Control	Thermal controlled fan, silent bearing type.		
Web Server	Embedded server supporting Flash Video RTMP server		
Network Protocol	RTP/RTCP, TCP/UDP, HTTP, DHCP, DNS Client		
Network Port	2 x RJ45, 10/100/1000Base-T		
Video Output	1 x DVI with a DVI-VGA DB15 Converter, 1 x HDMI		
Audio Output	1 x RCA Audio Output		
<b>Physical</b>			
Operating Temperature	14°F ~ 131°F		
Operating Humidity	20% - 80% Max.		
Input Voltage	DC12V, 3A	110VAC POE x 4	DC12V, 5A

### Specifications:

<b>Model:</b>	BN-NVR/N4	BN-NVR/N8	BN-NVR/N16
Maximum Cameras	4	8	16
Playback Channels	4	8	16
Number of Drives	2 x SATA II	4 x SATA II	
Max Storage / HDD	3TB		
Raid Level	RAID 0,1		RAID 0, 1, 5, 10
CPU	Marvell 88F6283 1.0GHz		Marvell 88F6282 1.6GHz
RAM	256MB		512MB
I/O Interface	2 x USB 2.0		2 x USB 2.0 & 1 x eSATA
LAN Speed	10/100/1000 Mbps (1xRJ45)		10/100/1000 Mbps (2xRJ45)
Voltage	100-240V		
Power Consumption	40W		90W
Dimension	140.0 x 109.8 x 219.0 mm		140.0 x 183.4 x 219.0 mm
Device Weight	4.67lbs		6.55lbs
Compression Format	MPEG4, M-JPEG, H.264, MxPEG (depends on IP camera)		
Recording Performance	60/120fps at 1.3M Total bitrate: 40Mbps		240fps at 1.3M Total bitrate: 80Mbps
Recording Type	Continuous record, record by schedule, event trigger record, digital input trigger record		
Remote Live View Control	Live view, preset/go, PTZ, remote I/O, snapshot, multi-view, digital PTZ, advanced E-Map, bandwidth monitoring		
Audio & Video Recording	Synchronized audio and video recording		
POS	Live view, record, playback, and search for every transaction		
Auto Backup	Automatically backup the recorded video of the date before to FTP server		
Intelligent Search	General motion, missing object, foreign object, lose focus, camera occlusion		
Remote Live View Connection	Live view maximum 64 connections per server at the same time		
<b>Remote Client Software Requirement</b>			
OS	Windows XP (32-bit) / Win7 (32 and 64-bit)		
CPU	Intel Core 2 Duo, 2.6GHz		
RAM	1GB		
LAN Transmission Speed	10/100/1000 Mbps (RJ45)		
UI	1. Web browser: Internet Explorer 8, 9 2. Client application program 3. iPhone, iPad, Android mobile live viewer		

# iPac 2.5 NVR Server



### Specifications:

<b>Model:</b>	iPac 2.5		
IP Camera Inputs	4,8,12,16,25,32,36,64*		
Digital PTZ	Supported in Live view and Playback		
Multi-Display	Enable max 64 channels with two screens to show live video and view recording		
Screen Resolution	1024x768, 1200x900, 1280x1024, 1366x768, 1440x900, 1600x1200, 1680x1050, 1920x1080, 1920x1200		
Audio & Video Recording	Synchronized audio & video recording		
Screen Division	1/4/6/9/10/13/16/25/36/49/64		
Compression Format	H.264; MPEG-4; M-JPEG; MxPEG		
Recording Type	Continuous record, record by digital input, motion record, event recording, boosting recording, record by schedule, manual record		
Playback Channels	Playback Max 16 channels		
Playback Control	Playback, backward playback, fast forward/backward playback		
Auto Recycling Recording	Auto recycling when storage disk is full		
Software Watchdog	OnGuard		
Video Intelligent	Add-on available		
<b>System Minimum Requirements</b>			
No. of Cameras	1~4*	1~16*	1~32
CPU	Intel Core i5-2500 or up	Intel Core i7-2600 or up	Intel Core i7-3930
Minimum RAM	4GB	4GB	8GB
OS	64-bit OS is recommended		
HDD Space	250GB or up		
Motherboard	Intel Chipset		
Video Card	ATI Radeon 4650 or above		

[www.bolideco.com](http://www.bolideco.com)



468 South San Dimas Ave. San Dimas, CA 91773 | Toll Free: 800-355-0895 | Tel: 909-305-8889 | Fax: 909-305-0999

All specifications are subject to change without notice. Please call or visit [www.bolideco.com](http://www.bolideco.com) for further information.