

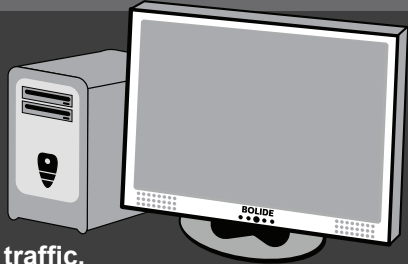
# DVR REMOTE ACCESS SETUP GUIDE

## SVR9000s Series

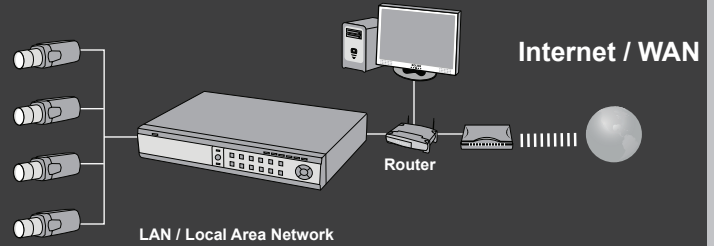
### START HERE

#### IMPORTANT:

Setting up remote access, DSL/Cable internet service, a router and a PC are required. Some ISPs may block incoming traffic, please consult with your ISP when you have any connection difficulties.

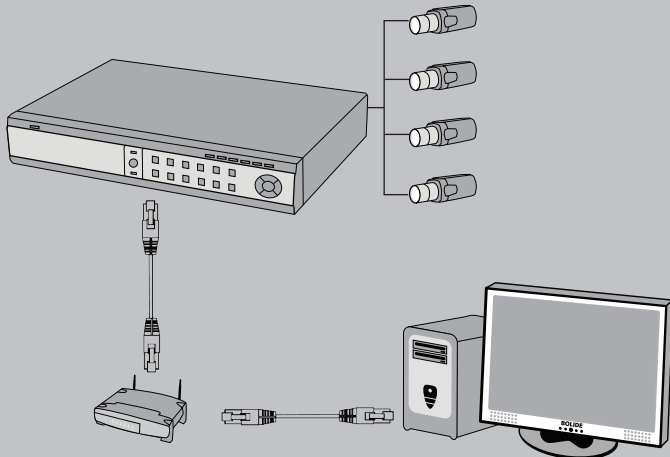


### Connection Diagram

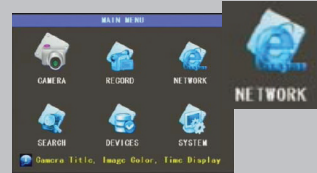


## EASY SETUP STEP 1 - 2 - 3

**1** Connect cameras to your DVR and plug in the network cable from DVR to Router.



**2** Once you have the connection ready, go to main menu on the DVR > Network



Choose DHCP > APPLY > EXIT  
Then reboot your DVR.

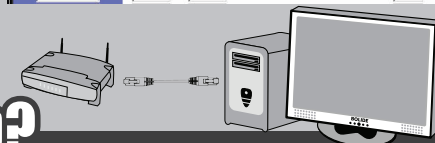
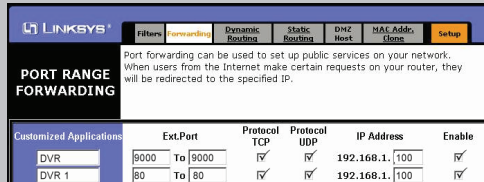
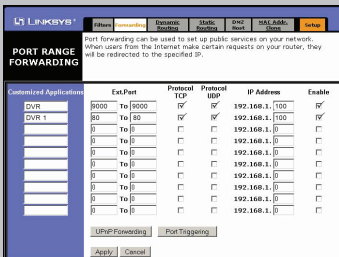
After the DVR is rebooted, you will receive an IP address from the Router.


For example here: 192.168.001.100



\*If you did not get an IP from router, simply repeat Step 2 again and check your network cable.

**3** After setting up the IP in the DVR, go to your PC and log in to your router (Router login information can be found in your router's user manual). Once you have logged into your router, go under port forwarding/firewall settings open the communication Port **80, 9000** and point it to your DVR IP address, for example 192.168.1.100



 \*If you encounter IE Active X error, please go to internet options > enable all Active X control under security settings. Please also make sure your computer is set to the same network mask.

To find out your network's IP, simply go to <http://www.whatismyip.com>

## Need More Help?

For information about features, please refer to the user manual for example settings and definitions. Additional product information can also be found in the Product Manual on the CD. Please feel free to give us a call or simply log on to <http://www.bolideco.com> for more information and support.

