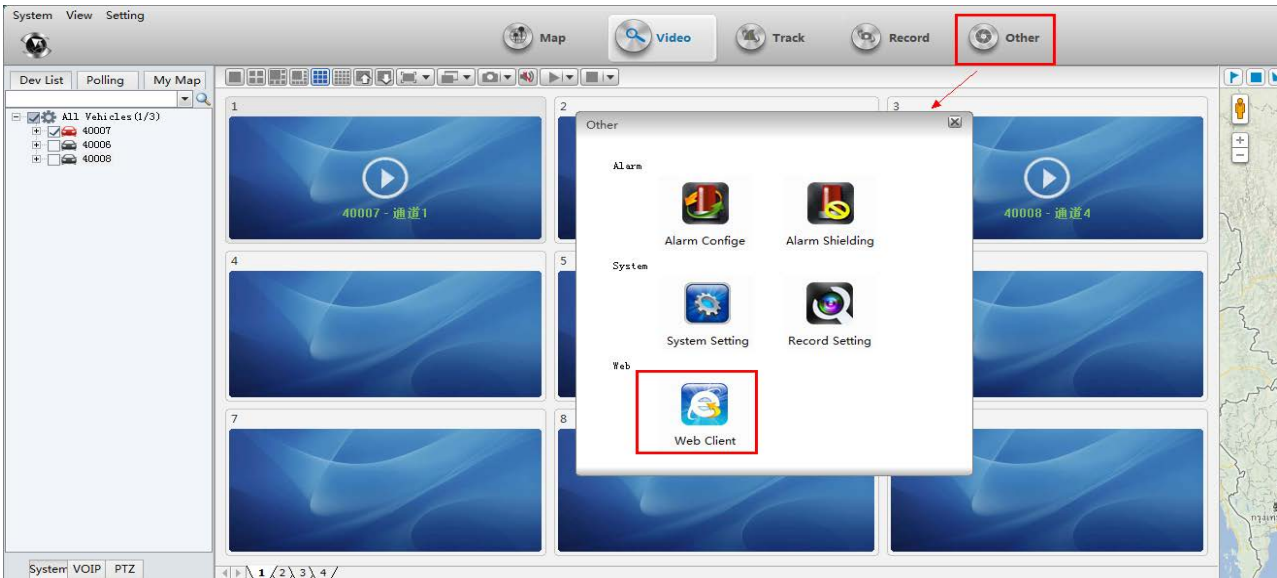
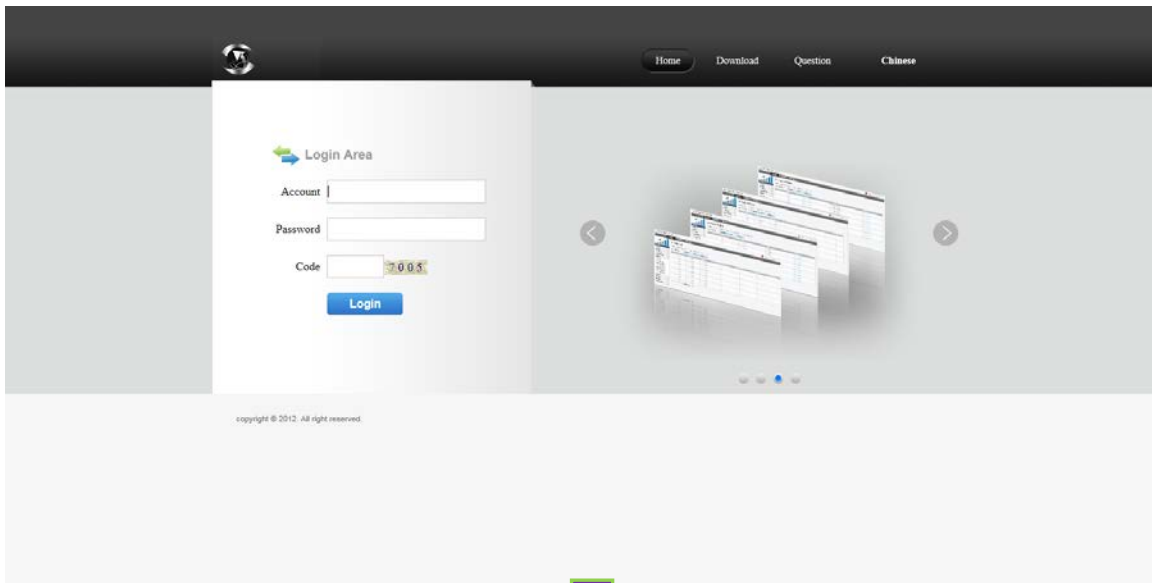


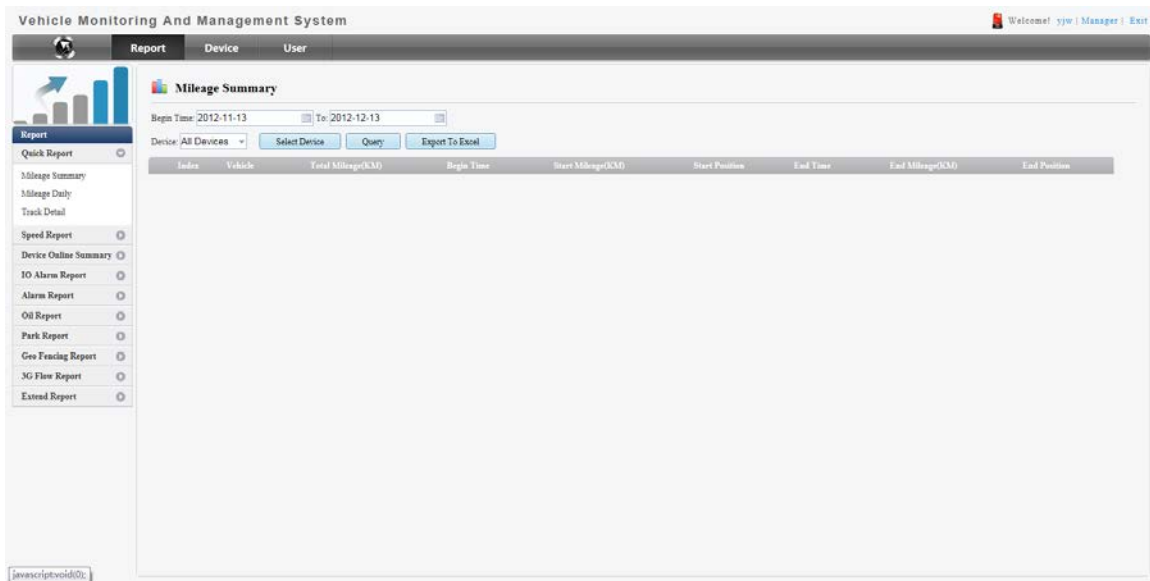
# Add third or more account

Step 1.Login CMS client→Click Other→Web Client



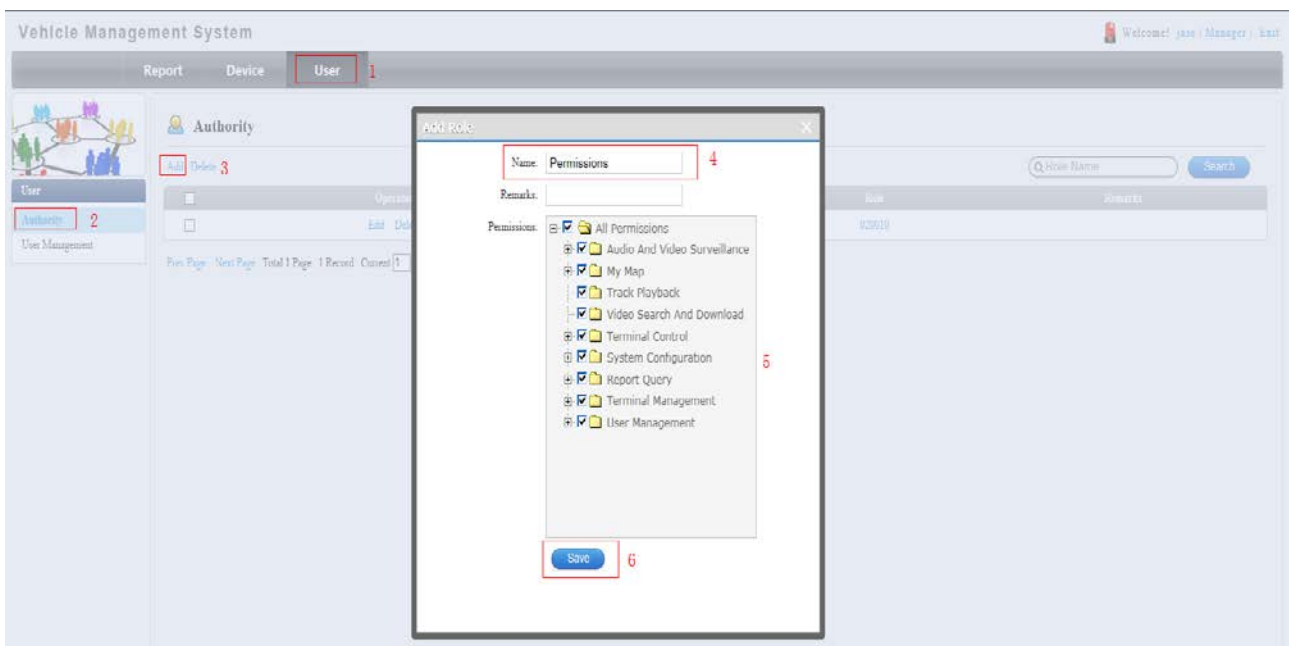
Step 2.Use the CMS client account login explorer (for example the have added account "test")



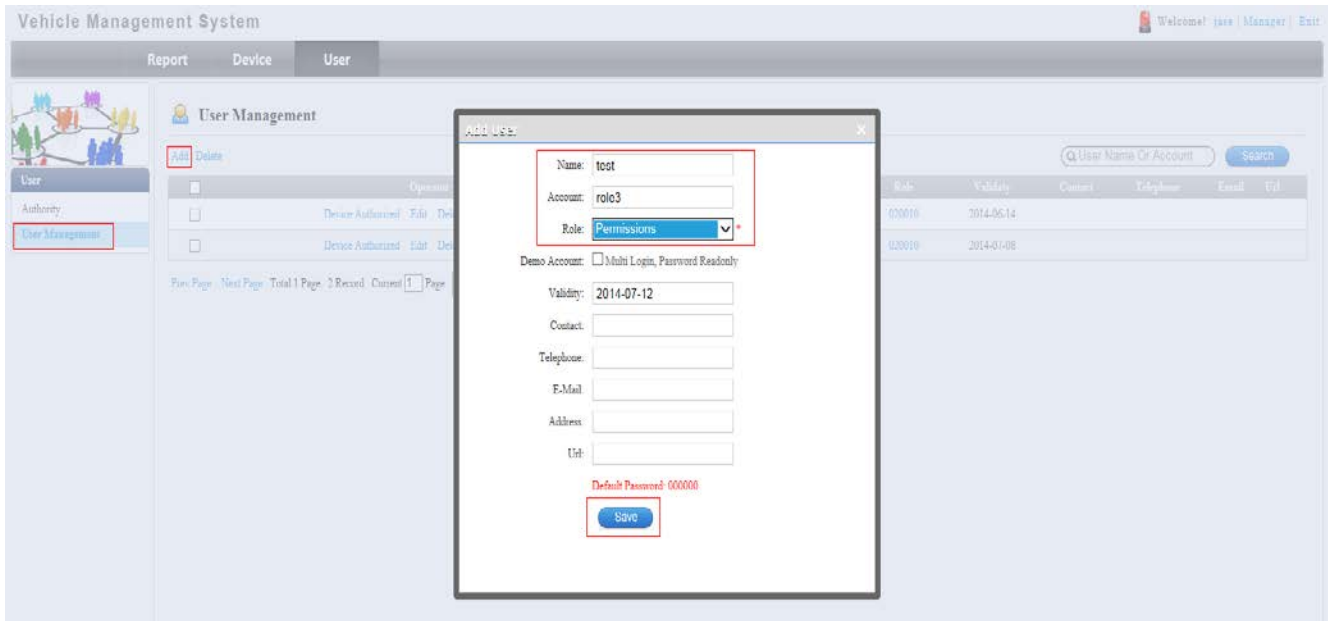


Now you can view the report at this interface, continue to add the third account management, etc.

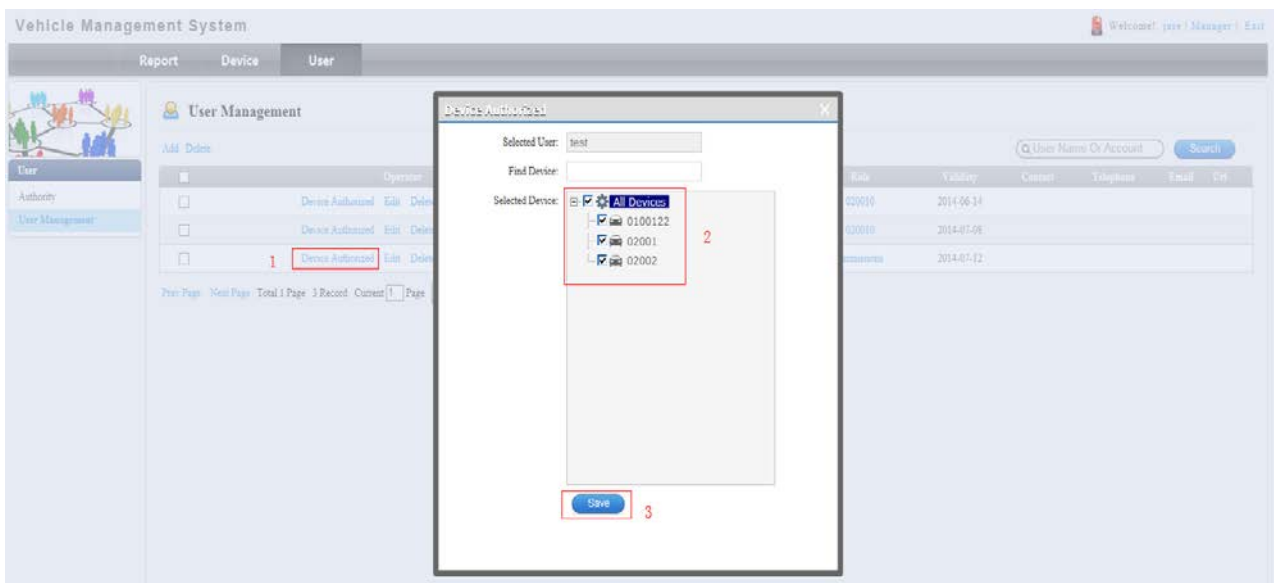
Step 3. Click User, then add authority, for example the "Permissions"



Step 4. Add third account or more, for example the account "role3"



#### 4. Device authorized, Select the devices to be managed



5. Then you can use "role3" login CMS client, the default password: 000000, the server: (fill in the server IP).



1010100110010010101  
010010001011110101  
101011011010191  
010111100001110010  
1001100110

User

Password

Server

Remember password  Automatic login