



BN-NVR / S4PoE



BN-NVR / S8PoE

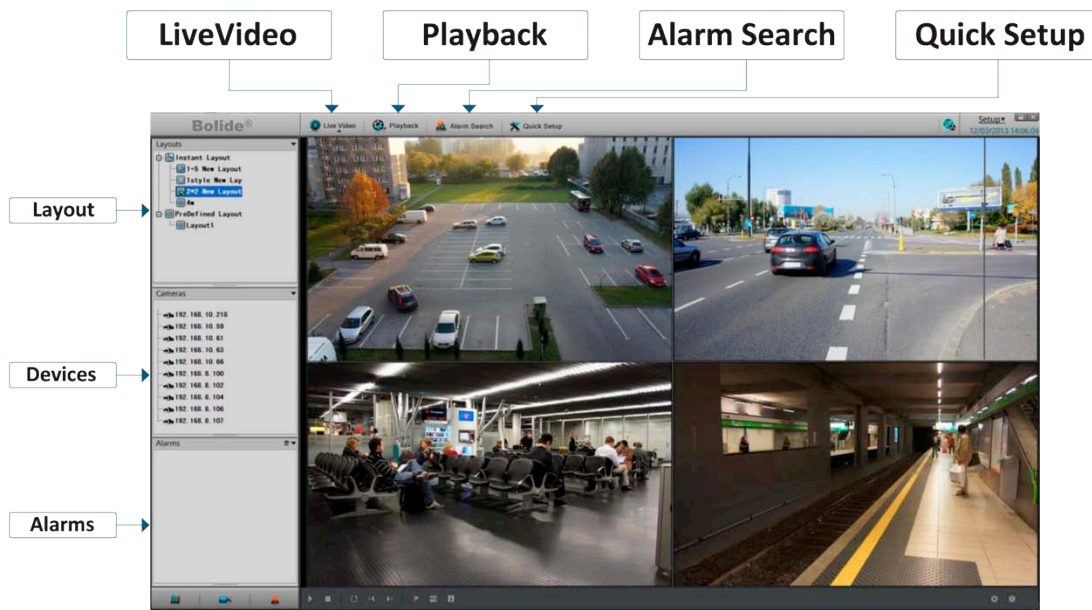


### SPECIAL FEATURES

- High Profile H.264, level 4.2
- Full support 2\* HDD, each HDD up to 4TB
- Simple to use GUI with mouse control
- Auto add Devices & Auto Schedule recording
- 100% Stability with Embedded Linux OS

### REMOTE ACCESS

- Playback and Live from Web Browser
- PC&MAC remote client application
- Smart Phone iOS or Android free App
- Download from iTunes / Google play



**BN-NVR/S4PoE**

- **4 CHANNEL RECORDING @ 1080p/720p**
- **4 CH PoE**
- **HIGH DEFINITION OUTPUT HDMI & VGA**



<b>VIDEO</b>		<b>BN-NVR / S4POE</b>
RECORDING	4 Channel 1080P / 720P	
OUTPUT DISPLAY	Single screen: 1x1080p/720p with Tour Quad display of 1080p/720p resolutions Split screen: 1/4 layout for 1080p/720p Live video	
RESOLUTIONS	VGA / HDMI resolution: 1280 x 720p, 1920 x1080p, 1024x768	
PLAYBACK	4Ch 1080p/720p	
VIDEO RECORDING	H.264 (ISO/IEC 144496-10) high profile to level 4.2	
RATE CONTROL	CBR (Constant Bit Rate), VBR (Variable Bit Rate) as defined by IP Device	
STREAM INPUT	720p: Standard 3Mbps 720p ( Main stream) or VGA quality (sub stream) 1080p: Standard 4.5 Mbps 1080p (main stream) or VGA quality (sub stream)	
<b>STORAGE</b>		
HDD CAPACITY	2xHDD Max 8TB with each HDD 4TB	
RECORDING TIME	720p: average bit-rate 3Mbps with 4Channel Up to 60 Days 1080p: average bitrate 4.5Mbps with 4Channel Up to 42 Days	
RECORDING MODE	Constant Recording / Motion detection recording	
<b>CONNECTIONS</b>		
POWER SWITCH	Power ON from connected power source / Power OFF software control with authentication	
VIDEO OUTPUTS	One VGA Output / One HDMI Output	
AUDIO IN / OUT	3.5mm linear audio output, support G711_A/G711_U	
USB	2 x USB2.0 interface, respectively as a backup and USB mouse. Support USB keyboard for name input	
<b>NETWORK</b>		
WEB SERVER	Embedded server supports Flash Video RTMP server (multi Browser Support) 4Ch Live Cameras real-time	
PROTOCOLS	RTP/RTCP, TCP/UDP, HTTP, DHCP, DNS, NTP, RTMP	
INTERFACE	1 RJ45 10M/100M network port, 4 RJ45 10M/100M POE network port	

**BN-NVR/S4PoE**

**All Browser Support**

**Flash Video  
Technology**

**Client Software**

<b>AUDIO</b>		<b>BN-NVR / S4POE</b>	
OUTPUT		Support for the rear panel LINE OUT	
RECORDING		G711 A-Law, G711 U-Law	
<b>PHYSICAL</b>			
COOLING		Main Chip cooling using heat sinks, plus thermal controlled intelligent cooling fan	
OPERATION HUMIDITY		5% to 90%	
OPERATION TEMPERATURE		0°C - 45°C	
APPROVALS		CE / FCC / RoHS Compliant	
CASE DIMENSIONS		L 215mm x W 150mm x H 100mm	
WEIGHT		2.38kg (no HDD installed)	
<b>ELECTRICAL</b>			
POWER SUPPLY		DC12V/5A 48V/1.04A FOR POE	
POWER CONSUMPTION		MAX 6W without HDD, MAX 18W with 2HDD	
<b>SOFTWARE</b>			
SUPPLIED		NVMS Application allows full remote configuration of NVR device NVR PC Client Application for remote monitor / playback of NVR device iOS / Android App.	
<b>CERTIFICATIONS</b>			
CE		Yes	
FCC		Yes	
RoHS Compliant		Yes	

**BN-NVR / S8PoE**

- **8 CHANNEL RECORDING @ 1080p/720p**
- **8 CH PoE**
- **HIGH DEFINITION OUTPUT HDMI & VGA**



<b>VIDEO</b>		<b>BN-NVR / S8POE</b>	
RECORDING	8 Channel 1080P / 720P		
OUTPUT DISPLAY	Single screen: 1x1080p/720p with Tour Quad display of 1080p/720p resolutions Split screen: 1/4/6/8/9 layout for 1080p/720p Live video		
RESOLUTIONS	VGA resolution: 1024x768, 1280x1024, 1600x1200 HDMI resolution: 1280x 720p, 1920 x1080p		
PLAYBACK	4Ch 1080p/720p		
VIDEO RECORDING	H.264 (ISO/IEC 144496-10) high profile to level 4.2		
RATE CONTROL	CBR (Constant Bit Rate), VBR (Variable Bit Rate) as defined by IP Device		
STREAM INPUT	720p: Standard 3Mbps 720p ( Main stream) or VGA quality (sub stream) 1080p: Standard 4.5 Mbps 1080p (Main stream) or VGA quality (sub stream)		
<b>STORAGE</b>			
HDD CAPACITY	2xHDD Max 8TB with each HDD 4TB		
RECORDING TIME	720p: average bit-rate 3Mbps with 4Channel Up to 60 Days 1080p: average bitrate 4.5Mbps with 4Channel Up to 42 Days		
RECORDING MODE	Constant Recording / Motion detection recording		
<b>CONNECTIONS</b>			
POWER SWITCH	Power ON from connected power source / Power OFF software control with authentication		
VIDEO OUTPUTS	One VGA Output, One HDMI Output		
AUDIO IN / OUT	3.5mm linear audio output, support G711_A/G711_U		
USB	2 x USB2.0 interface, respectively as a backup and USB mouse. SupportsUSB keyboard for name input		
<b>NETWORK</b>			
WEB SERVER	Embedded server supporting Flash Video RTMP server (multi Browser Support) 4Ch Live Cameras real-time		
PROTOCOLS	RTP/RTCP,TCP/UDP, HTTP, DHCP, DNS, NTP, RTMP		
INTERFACE	1 RJ45 10M/100M network port, 8 RJ45 10M/100M PoE network port		


**BN-NVR / S8PoE**


All Browser Support


 Flash Video  
 Technology


Client Software

AUDIO	
OUTPUT	Support for the rear panel LINE OUT
RECORDING	G711 A-Law, G711 U-Law
PHYSICAL	
COOLING	Main Chip cooling using heat sinks, plus thermal controlled intelligent cooling fan
OPERATION HUMIDITY	5% to 90%
OPERATION TEMPERATURE	0°C - 45°C
APPROVALS	G711 A-Law, G711 U-Law
CASE DIMENSIONS	L 372mm x W 305mm x H 44,45mm
WEIGHT	3,34kg No HDD installed
ELECTRICAL	
POWER SUPPLY	100-240V / 47-63Hz 3A
POWER CONSUMPTION	MAX 6W without HDD, MAX 18W with 2HDD
SOFTWARE	
SUPPLIED	NVMS Application allows full remote configuration of NVR devices NEW PC Client Application for remote monitor / playback of NVR device iOS / Android App.
CERTIFICATIONS	
CE	Yes
FCC	Yes
RoHS Compliant	Yes