

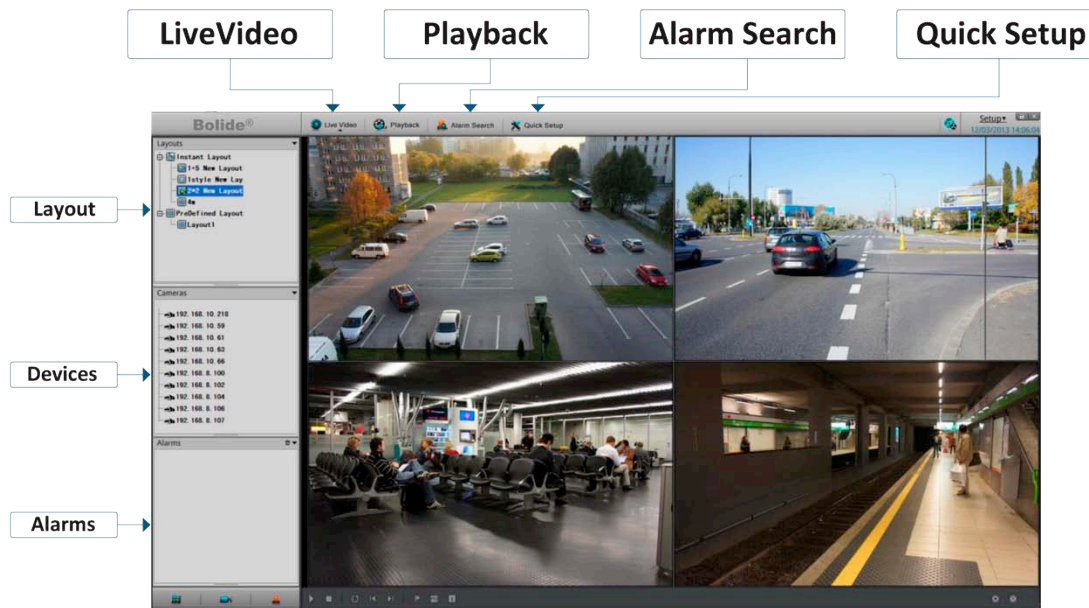


SPECIAL FEATURES

- High Profile H.264, level 5.0
- Full support 4* HDD, each HDD up to 4TB
- High Definition Output HDMI & VGA
- Simple to use GUI with mouse control
- Auto add Devices & Auto Schedule recording
- 100% Stability with Embedded Linux OS

REMOTE ACCESS

- Playback and Live from Web Browser
- PC&MAC remote client application
- Smart Phone iOS or Android free App
- Download from iTunes / Google play

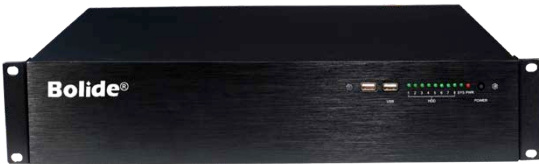


BN-NVR / S16H

- **16 CHANNEL RECORDER 5MP / 3MP / 1080p/720p**
- EMBEDDED HARD DRIVE
- NONE HOTSWAP
- RACK INSTALLATION



VIDEO	BN-NVR / S16H
RECORDING	16Ch 5MP/3MP/1080p/720p
OUTPUT DISPLAY	Single screen: 1x1080p/720p with Tour Quad display of 1080p/720p resolutions Split screen: 1/ 4 layout for 1080p/720p Live video
RESOLUTIONS	HDMI /VGA resolution: 1280x 720p, 1920 x1080p, 1024X768
PLAYBACK	4Ch 1080p/720p, support 5MP
VIDEO RECORDING	H.264 (ISO/IEC 144496-10) high profile to level 4.2
RATE CONTROL	CBR (Constant Bit Rate), VBR (Variable Bit Rate) as defined by IP Device
STREAM INPUT	720p: Standard 3Mbps 720p (Main stream) or VGA quality (sub stream) 5M/ 3M/ 1080p: Standard 4.5 Mbps 1080p (Main stream) or VGA quality (sub stream)
STORAGE	
HDD CAPACITY	4 x HDD Max 16TB with each HDD 4TB
RECORDING TIME	720p: average bit-rate 3Mbps with 16Channel Up to 30 Days 1080p/3MP/5MP: average bitrate 4.5Mbps with 16 Channel Up to 20 Days
RECORDING MODE	Constant Recording / Motion detection recording
CONNECTIONS	
POWER SWITCH	Power ON from connected power source / Power OFF software control with authentication
VIDEO OUTPUTS	One VGA Output, One HDMI Output
AUDIO IN / OUT	3.5mm linear audio output, support G711_A/G711_U
USB	2 x USB2.0 interface, respectively as a backup and USB mouse. Support USB keyboard for name input
NETWORK	
WEB SERVER	Embedded server supporting Flash Video RTMP server (multi Browser Support) 4Ch Live Cameras real-time
PROTOCOLS	RTP/RTCP, TCP/UDP, HTTP, DHCP, DNS, NTP, RTMP
INTERFACE	1 RJ45 10M/100M/1000M network port, 8 RJ45 10M/100M PoE network port

BN-NVR/S16H


All Browser Support

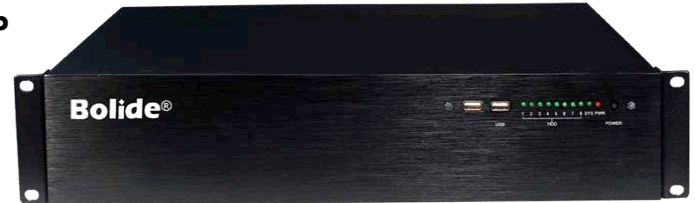

 Flash Video
 Technology

 Client Software
 PC & Mac

AUDIO		BN-NVR / S16H
OUTPUT	Support for the rear panel LINE OUT	
RECORDING	G711 A-Law, G711 U-Law from Camera	
PHYSICAL		
COOLING	Main Chip cooling using heat sinks, plus thermal controlled intelligent cooling fan	
OPERATION HUMIDITY	5% to 90%	
OPERATION TEMPERATURE	0°C - 45°C	
APPROVALS	CE / FCC / RoHS Compliant	
CASE DIMENSIONS	L 440mm x W 435mm x 89.8mm	
WEIGHT	7.2Kg No HDD installed	
ELECTRICAL		
POWER SUPPLY	AC110/220V, 47-63HZ	
POWER CONSUMPTION	Max 15W without HDD, USB device; Max 40W with 4HDD	
SOFTWARE		
SUPPLIED	NVMS Application allows full remote configuration of NVR devices NVR PC Client Application for remote monitor / Playback of NVR device iOS / Android App	
CERTIFICATIONS		
CE	Yes	
FCC	Yes	
RoHS Compliant	Yes	

BN-NVR / S32H

- **32 CHANNEL RECORDER 5MP/3MP/1080P/720P**
- EMBEDDED HARD DRIVE
- NONE HOTSWAP
- RACK INSTALLATION



VIDEO		BN-NVR / S32H
RECORDING	32Ch 5MP/3MP/1080p/720p	
OUTPUT DISPLAY	Single screen: 1x1080p/720p with Tour Quad display of 1080p/720p resolutions Split screen: 1/4/6/8/9/16 layout for 1080p/720p Live video	
RESOLUTIONS	HDMI / VGA resolution: 1280x 720p, 1920 x 1080p, 1024 x 768	
PLAYBACK	4Ch 1080p/720p, supports 5MP	
VIDEO RECORDING	H.264 (ISO/IEC 144496-10) high profile to level 5.0	
RATE CONTROL	CBR (Constant Bit Rate), VBR (Variable Bit Rate) as defined by IP Device	
STREAM INPUT	720p: Standard 3Mbps 720p (Main stream) or VGA quality (sub stream) 5M/ 3M/ 1080p: Standard 4.5 Mbps 1080p (main stream) or VGA quality (sub stream)	
STORAGE		BN-NVR / S32H
HDD CAPACITY	4 x HDD Max 16TB with each HDD 4TB	
RECORDING TIME	720p: average bit-rate 3Mbps with 16Channel Up to 15 Days 1080p/3MP/5MP: average bitrate 4.5Mbps with 32 Channel Up to 10 Days	
RECORDING MODE	Constant Recording / Motion detection recording	
CONNECTIONS		BN-NVR / S32H
POWER SWITCH	Power ON from connected power source / Power OFF software control with authentication	
VIDEO OUTPUTS	One VGA Output, One HDMI Output	
AUDIO IN / OUT	3.5mm linear audio output, support G711_A/G711_U	
USB	2 x USB2.0 interface, respectively as a backup and USB mouse. Support USB keyboard for name input	
NETWORK		BN-NVR / S32H
WEB SERVER	Embedded server supports Flash Video RTMP server (multi Browser Support) 4Ch Live Cameras real-time	
PROTOCOLS	RTP/RTCP,TCP/UDP, HTTP, DHCP, DNS, NTP, RTMP	
INTERFACE	2 RJ45 10M/100M/1000M network	

BN-NVR / S32H


All Browser Support


 Flash Video
 Technology

 Cliente Software
 PC & Mac

AUDIO		BN-NVR / S32H
OUTPUT	Support for the rear panel LINE OUT	
RECORDING	G711 A-Law, G711 U-Law from Camera	
PHYSICAL		
COOLING	Main Chip cooling using heat sinks, plus thermal controlled intelligent cooling fan	
OPERATION HUMIDITY	5% to 90%	
OPERATION TEMPERATURE	0°C - 45°C	
APPROVALS	CE / FCC / RoHS Compliant	
CASE DIMENSIONS	L 440mm x W 435mm x 89.8mm	
WEIGHT	7.2Kg No HDD installed	
ELECTRICAL		
POWER SUPPLY	AC110/220V, 47-63HZ	
POWER CONSUMPTION	Max 15W without HDD, USB device; Max 40W with 4HDD	
SOFTWARE		
SUPPLIED	Existing NVR Client Application allows full remote configuration of NVR devices NEW PC Client Application for remote monitor / playback of NVR device iOS / Android App. Full device settings live monitoring & recording playback from NVR	
CERTIFICATIONS		
CE	Yes	
FCC	Yes	
RoHS Compliant	Yes	